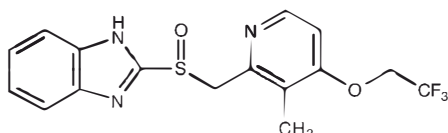


# LASOPROL

**DESCRIPTION:** Lansoprazole is a gastric proton pump inhibitor. It is a substituted benzimidazole derivative which acts on the final step of acid production and therefore controls intragastric acidity irrespective of stimulus. It markedly inhibits basal and stimulated gastric acid secretion. Thus it is an antisecretory drug which is very effective for rapidly healing peptic ulcers and erosive oesophagitis, and for reducing gastric acid hypersecretion in patients with Zollinger Ellison syndrome.



**COMPOSITION:** Each delayed release capsule contains Lansoprazole 30 mg (as enteric coated granules).

**ACTION:** Abolition of basal and stimulated gastric acid secretion irrespective of the stimulus through selective inhibition of the gastric parietal cell proton pump. No effect on pepsin secretion or gastric emptying. Significantly faster healing of peptic ulcers than with H<sub>2</sub> receptor antagonists. Effective in patients not responding to H<sub>2</sub> receptor antagonists.

**PHARMACOKINETICS:** Absorption depends on formulation and dose. Rapidly absorbed after release from EC formulations. Bioavailability increased with higher doses and prolonged therapy. Plasma protein binding 95-96%. Metabolised rapidly and completely in the liver. Eliminated in urine, up to 80% of the oral dose. Liver disease increases bioavailability. Food delays absorption.

Lasoprol capsules 15mg: 14's

Lasoprol capsules 30mg: 14's

**INDICATIONS:** Duodenal and gastric ulcers, reflux or ulcerative oesophagitis, Zollinger Ellison syndrome, NSAID induced ulcers.

**DOSAGE AND ADMINISTRATION:** Swallow the capsule with water. Do not crush or chew the granules.

Gastric ulcer 30 mg once daily for 4-8 weeks, in severe cases increase to 60 mg once daily.

Reflux oesophagitis 30 mg once daily for 4 weeks.

Refractory cases 60 mg once daily

Duodenal ulcer 30 mg once daily for 2-4 weeks

Zollinger Ellison syndrome 120 mg once daily

Maintenance therapy 30-60 mg adjusted to response.

**CONTRAINDICATIONS:** Hypersensitivity to Lansoprazole. Lactation.

**ADVERSE REACTIONS:** Generally well tolerated with no serious reactions. Side effects are mostly mild, and include gastrointestinal disturbances, constipation, diarrhea, headache, drowsiness. Incidence not higher in the elderly.

**CAUTION:** Exclude gastric malignancy. Long-term use with care. Not recommended for children.

**PREGNANCY AND LACTATION:** Avoid during pregnancy, except if absolutely necessary. This drug should not be used during lactation.

**INTERACTIONS:** Increases concentration of diazepam, phenytoin, warfarin and digoxin. Reduces absorption of iron, ampicillin and ketoconazole. Food delays absorption and bioavailability.

**STORAGE:** Store in a dry and dark place below 25°C.

Reg. N° Lebanon